

**SALM  
MARKETING  
PVT LTD**



## WHY SALM

Free ID Registration

Repurchase not Mandatory

Business never becomes zero

100 % Distribution

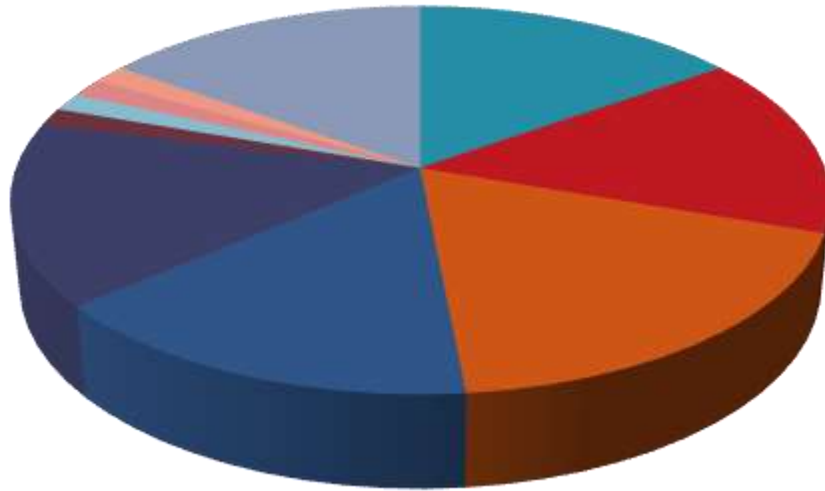
Business Carry Forward

70 % Business Volume

Best customer care support

Simple Marketing Plan

## Revenue Distribution



- Offer Income 10%
- Performance Bonus 5%–10%
- Business Building Bonus 8%–12%
- Leadership Bonus 5%–10%
- Rewards and Awards 5%–10%
- Travel Fund 1%
- Car Fund 1%
- House Fund 1%
- Royalty 1%
- Franchise Model 5%–10%

# REGISTRATION AND ACTIVATION

REGISTRATION IS FREE

ACTIVATION WITH BUYING A SINGLE PRODUCT

| DIRECT SELLER LEVEL | QUANTITY /DIRECTS | ACCUMULATIVE BV | PERFORMANCE BONUS | TEAM DEVELOPMENT BONUS | ROYALTY BONUS |
|---------------------|-------------------|-----------------|-------------------|------------------------|---------------|
| DISTRIBUTOR         | 01                | 840             | 5%                | 8%                     | Deactive      |
| DISTRIBUTOR 1 *     | 10                | 8400            | 8%                | 9%                     | Deactive      |
| DISTRIBUTOR 2 *     | 20                | 16800           | 10%               | 10%                    | Deactive      |
| DISTRIBUTOR 3 *     | 42                | 35280           | 11%               | 11%                    | Deactive      |
| DIRECTOR            | 84                | 70560           | 12%               | 12%                    | 1%            |

ROYALTY CAN ONLY BE ACHIEVED IF A DIRECT SELLER BECOMES FAST START DIRECTOR

**I.E Purchases 84 products (70560 BV) in a single bill**

70 % Business Volume

## TYPES OF INCOMES

1. Retail Profit

2. Offer Income

3. Performance Bonus

4. Business Building Bonus

5. Leadership Bonus

6. Travel Fund

7. Car Fund

8. House Fund

9. Royalty

10. Franchise Income

11. Recharge Income

## RETAIL PROFIT

Retail profit is the difference between the revenue that a retailer earns through direct sales

| DP WITH GST | MRP  | PROFIT | PROFIT % |
|-------------|------|--------|----------|
| 1350        | 1800 | 450    | 25 %     |

450 RS is the Retail profit earned by a Direct seller

## OFFER INCOME

10 % Product is free on purchase

Free product is charged at Rs 01 only

If a Direct seller buys 10 products in a single bill, than Direct seller gets 01 product @ Rs 01.

If a Direct seller buys 20 products in a single bill, than Direct seller gets 02 products @ Rs 01 each.

If a Direct seller buys 42 products in a single bill, than Direct seller gets 04 products @ Rs 01 each.

If a Direct seller buys 84 products in a single bill, than Direct seller gets 08 products @ Rs 01 each.

# PERFORMANCE BONUS

| DIRECT SELLER LEVEL | SELF BUSINESS PRODUCTS / DIRECTS | ACCUMULATIVE BV |         | % ACHIEVEMENT |
|---------------------|----------------------------------|-----------------|---------|---------------|
|                     |                                  | MINIMUM         | MAXIMUM |               |
| Distributor         | 01                               | 01              | 8399    | 5%            |
| Distributor 1*      | 10                               | 8400            | 16799   | 8%            |
| Distributor 2*      | 20                               | 16800           | 35279   | 10%           |
| Distributor 3*      | 42                               | 35280           | 70559   | 11%           |
| Director            | 84                               | 70560           | -       | 12%           |

## ADDITIONAL BENEFITS (FAST START)

| Single Bill | Fast Start | Royalty |
|-------------|------------|---------|
| 70560 BV    | 12%        | 1%      |



# BUSINESS BUILDING BONUS

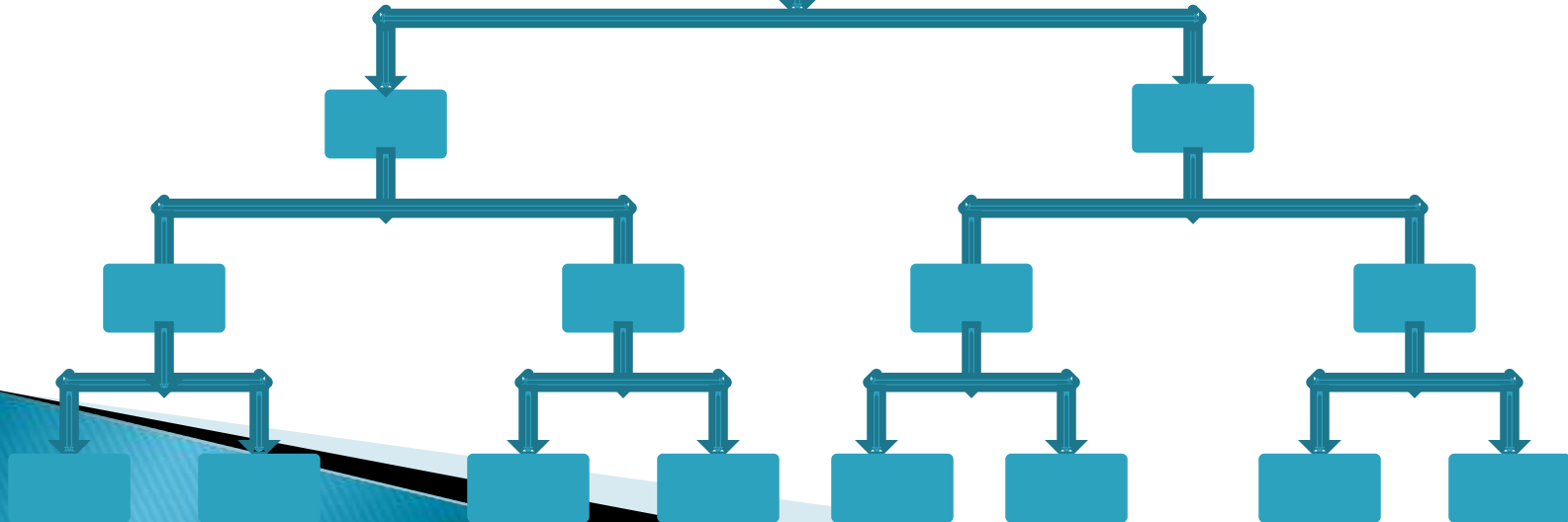
| DIRECT SELLER LEVEL                                    | SELF BUSINESS PRODUCTS/ DIRECTS | ACCUMULATIVE BV |         | % ACHIEVEMENT | CAPPING PER DAY |
|--------------------------------------------------------|---------------------------------|-----------------|---------|---------------|-----------------|
|                                                        |                                 | MINIMUM         | MAXIMUM |               |                 |
| Distributor                                            | 01                              | 01              | 8399    | 8%            | 5000            |
| Distributor 1*                                         | 10                              | 8400            | 16799   | 9%            | 10000           |
| Distributor 2*                                         | 20                              | 16800           | 35279   | 10%           | 15000           |
| Distributor 3*                                         | 42                              | 35280           | 70559   | 11%           | 25000           |
| Director                                               | 84                              | 70560           | -       | 12%           | 50000           |
| Business Building Bonus is calculated on pair matching |                                 |                 |         |               |                 |
| Business Building Bonus is calculated on 1:1 Ratio     |                                 |                 |         |               |                 |

# LEADERSHIP BONUS

You Earn Accumulated Business Building Bonus Of **Rs. 10,00,000**

You Will Get **Rs. 2,10,000** Leadership Bonus.

| BUSINESS BUILDING BONUS EARNED | LEADERSHIP BONUS |
|--------------------------------|------------------|
| 100000                         | 42000            |
| 500000                         | 168000           |
| 1000000                        | 210000           |



1 PV = 840BV:840BV

## Awards & Rewards

| RANK             | PV       | REWARDS                          | AWARDS   |
|------------------|----------|----------------------------------|----------|
| SILVER           | 100      | DISHTV DTH ONE YEAR FREE         | ---      |
| GOLD             | 200      | RTP IN GOA                       | ---      |
| PEARL            | 500      | RTP IN MANALI                    | ---      |
| RUBY             | 1000     | MOBILE PHONE                     | ---      |
| DIAMOND          | 5000     | IPHONE LATEST MODEL              | 20000    |
| CROWN            | 10000    | 1 LAKHS DOWNPAYMENT FOR CAR      | 50000    |
| UNIVERSAL        | 50000    | CAR WORTH 6 LAKHS                | 100000   |
| DOUBLE PEARL     | 100000   | CAR WORTH 10 LAKHS               | 2 LAKHS  |
| DOUBLE RUBY      | 500000   | LUXURY 3 BHK FLAT WORTH 70 LAKHS | 15 LAKHS |
| DOUBLE DIAMOND   | 1000000  | LUXURY 4 BHK FLAT WORTH RS 1 Cr  | 25 LAKHS |
| DOUBLE CROWN     | 5000000  | LUXURY BUNGLOW WORTH RS 4 Cr     | 4 Cr     |
| DOUBLE UNIVERSAL | 10000000 | LUXURY BUNGLOW WORTH RS 6 Cr     | 6 Cr     |

**TRAVEL FUND**

DIRECTOR

DIRECTOR

DIRECTOR

When 02 Distributors in your direct achieve Director level, you are eligible for Travel Fund @ 1%

Travel Fund Capping 500 Rs / Day

## CAR FUND

DIRECTOR

DIRECTOR

DIRECTOR

DIRECTOR

When 03 Distributors in your direct achieve Director level, you are eligible for Car Fund @ 1%

Car Fund Capping 1000 Rs / Day

## HOUSE FUND

DIRECTOR

DIRECTOR

DIRECTOR

DIRECTOR

DIRECTOR

DIRECTOR

DIRECTOR

When 06 Distributors in your direct achieve Director level, you are eligible for House Fund @ 1%

House Fund Capping 1500 Rs / Day

## ROYALTY

If a Direct seller purchases 70560 BV products in a single bill than He/She will be eligible for 1% Royalty

OR

If a Direct seller does 84 directs within 30 days of joining than He /She will be eligible for 1% Royalty

1% Turnover of the company will be equally distributed to all the Royalty achievers

FRANCHISE INCOME

**Salm**  
Marketing Pvt. Ltd.

COMING

SOON



RECHARGE INCOME

COMING

SOON

# TERMS AND CONDITIONS

## **PAYOUT**

Performance Bonus and Business Building Bonus payout will be on daily basis.

Leadership Bonus, Travel Fund, Car Fund, House Fund, Royalty will be paid on monthly basis.

KYC is mandatory for Payout.

One Pan card One id

No time limit for Rewards and Awards

## **DEDUCTIONS**

TDS - 5%

ADMIN - 5%

RECHARGE WALLET - 5%

## REACH US

For further enquiries:

**Salm Marketing Private Limited**

**Aaseri House, Om Colony,**

**Above Gramin Shakti Bank,**

**Churu, Rajasthan**

**Customer Care : 9680278786**

**Email : salmmarketing11@gmail.com**

# WEBSITE

[www.salmworld.com](http://www.salmworld.com)

